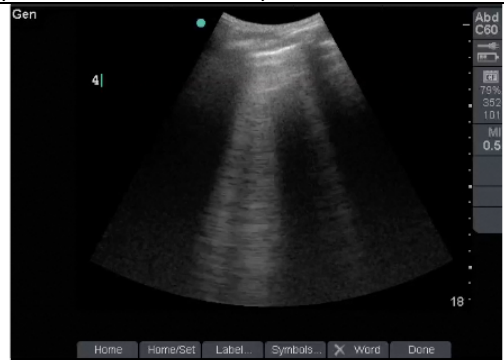
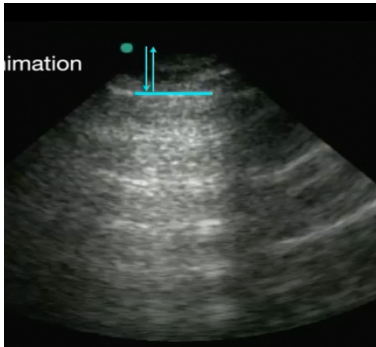


Lung Ultrasound Reference Guide

Normal Lung = A lines: normal reverberation of sound waves bouncing btwn probe and pleural line *linear probe

Abnormal Lung: B Lines: vertical lines that start at the pleural line and move back and forth with respiration, suggesting fluid in alveolar space or fibrosis. *linear probe



Severity Rating	Description
Negative	No B-lines or fewer than 3 discrete B lines seen at any time
Mild	At least 3 discrete B lines per rib space, few in number, intermittently present
Moderate	Many or partially discrete or partially-coalesced B lines, persistently present
Severe	Complete coalescence of B-lines, many in number, persistently present

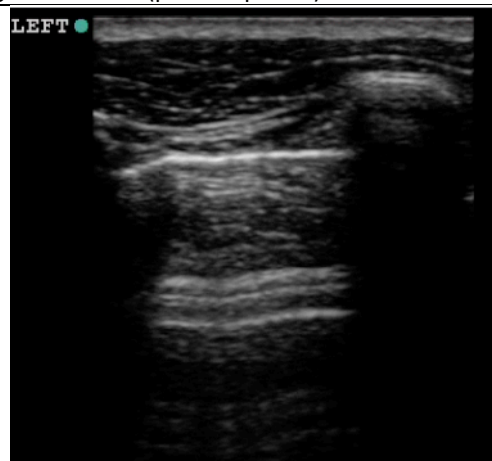
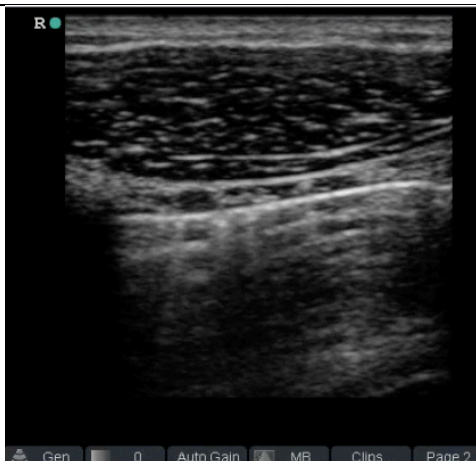
Pleural Effusion

No Effusion	Mid-Axillary view w/ Effusion	Parasternal Long View w/ Effusion
Note: Diaphragm with liver mirroring above diaphragm (*)	Diaphragm with anechoic structure above, + spine sign (*)	Fluid posterior to Thoracic Aorta (*)

Pneumothorax

Normal Lung: "lung slide" = visceral and parietal pleura sliding back and forth. Creates "comet tails"

Abnormal, lack of slide between visceral and parietal pleura. Just bright white line (parietal pleura)



On M- Mode: "Seashore Sign" if normal lung slide.

"Barcode Sign", if lack of lung slide

